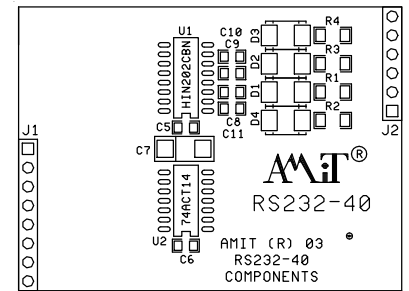


# AM-RS232

Communication Module

- RS232 interface communication module
- TTL control
- Power supply +5 V
- Soft overvoltage protection



## TECHNICAL DATA

Overvoltage protection	Transil 600 W
Galvanic separation	No
Power supply	5 V DC $\pm 10\%$
Control signals	TTL
Operating temperature	0 to 70 °C
Max. ambient humidity	< 95 % non-condensing
Cover protection rate	IP00
Dimensions (w x h x d)	38.5 x 51.5 x 20 mm
Weight	50 g

## ORDERING INFORMATION

<b>AM-RS232</b>	RS232 interface communication module, warranty card, data sheet
-----------------	---

## CONNECTORS WIRING

J1 connector		
PIN	Signal	Description
1	Vcc	Power supply +5 V DC
2	TxD0	Output for LED indication
3	TxD	Input TTL
4	RTS	Input TTL
5	RxD	Output TTL
6	CTS	Output TTL
7	GND	Ground
8	GND	Ground

J2 connector		
PIN	Signal	Description
1	GND	Ground
2	TxD	Output RS232
3	RxD	Input RS232
4	RTS	Output RS232
5	CTS	Input RS232
6	GND	Ground

## PHYSICAL DIMENSIONS

